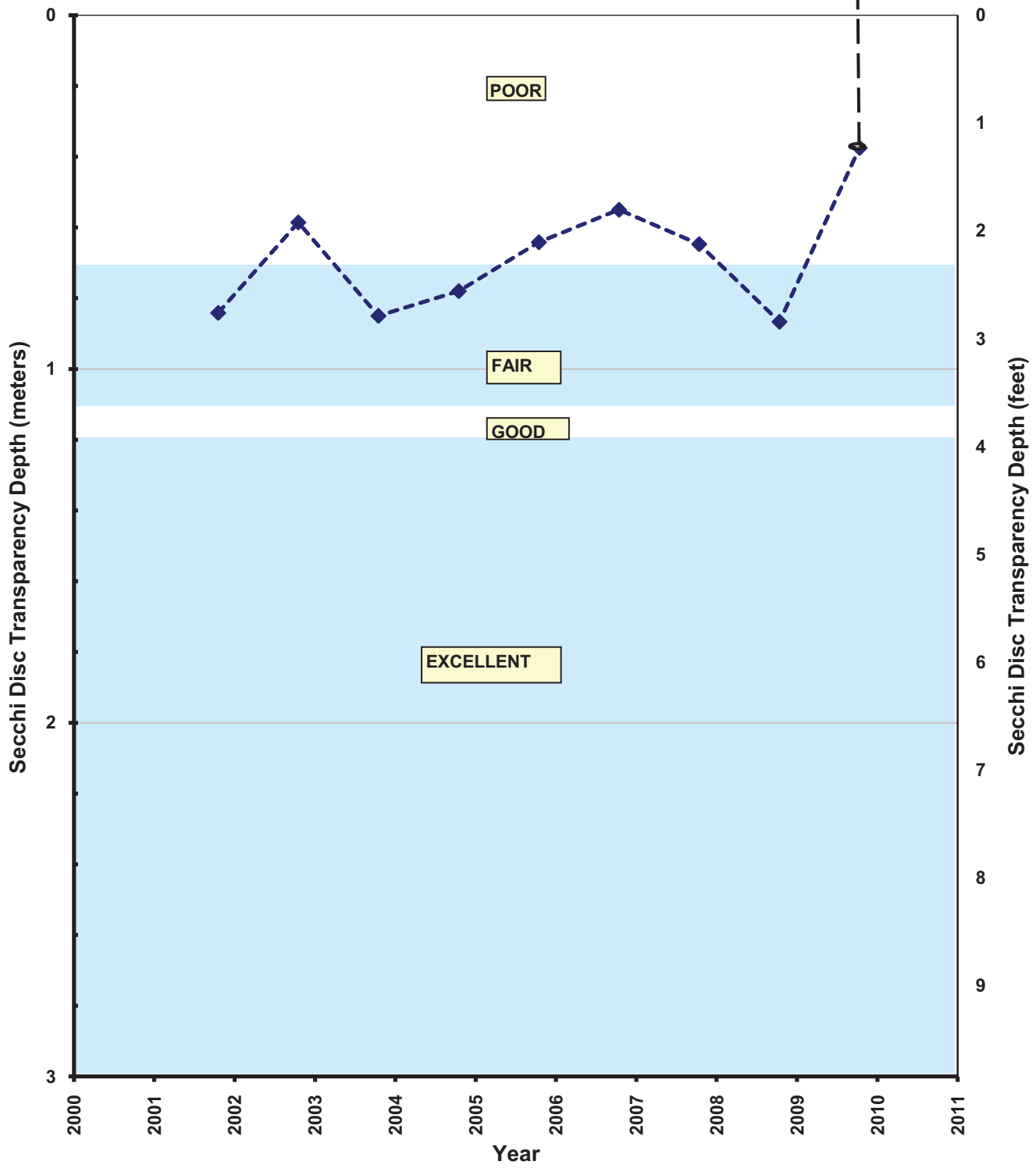
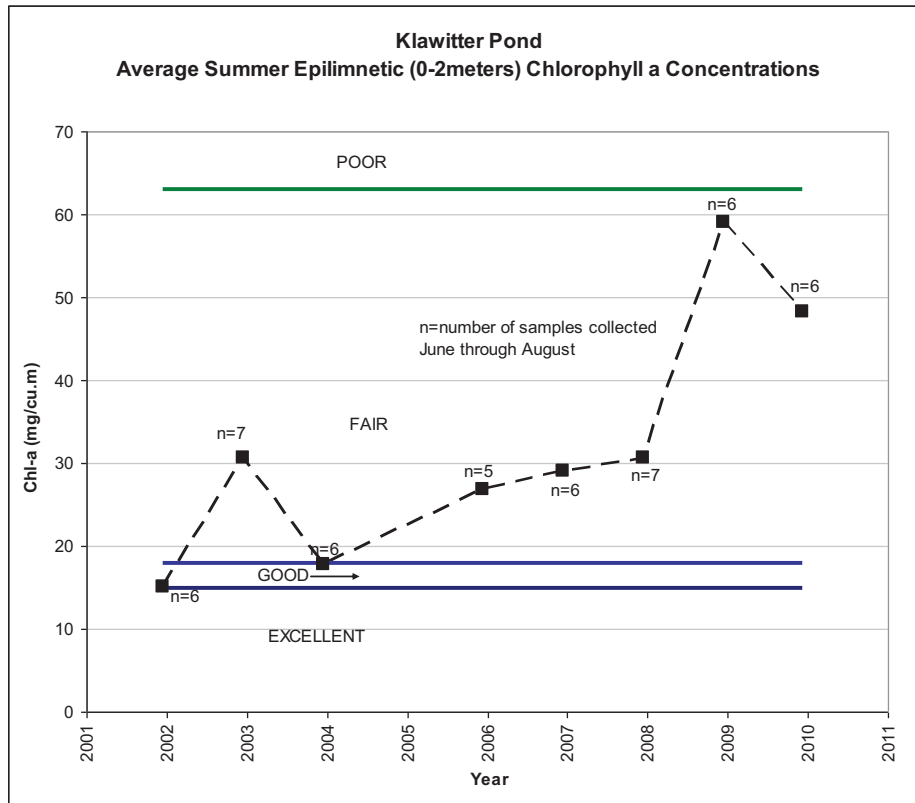
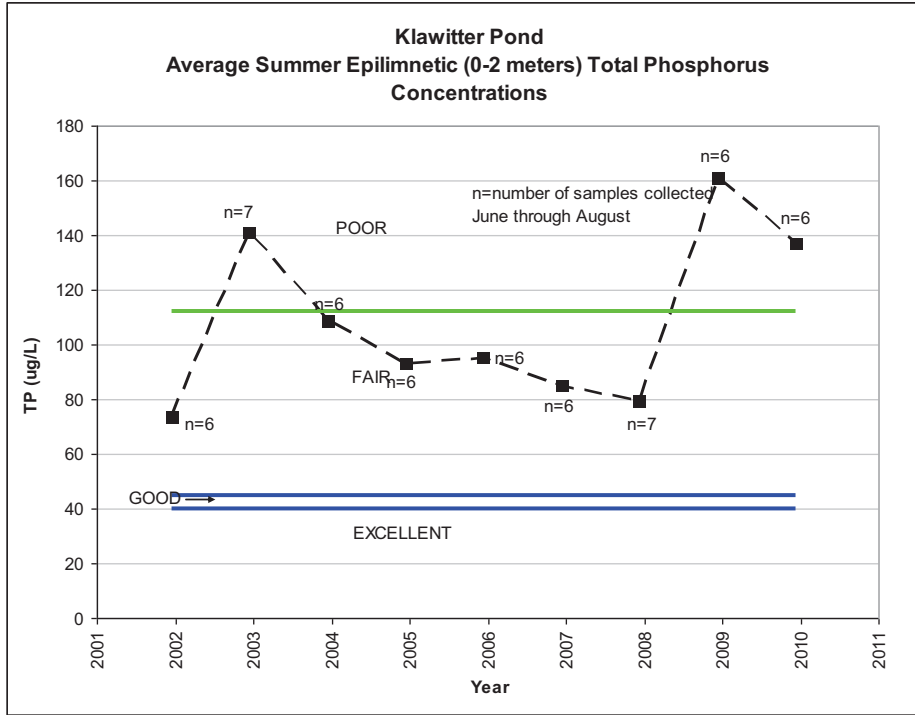


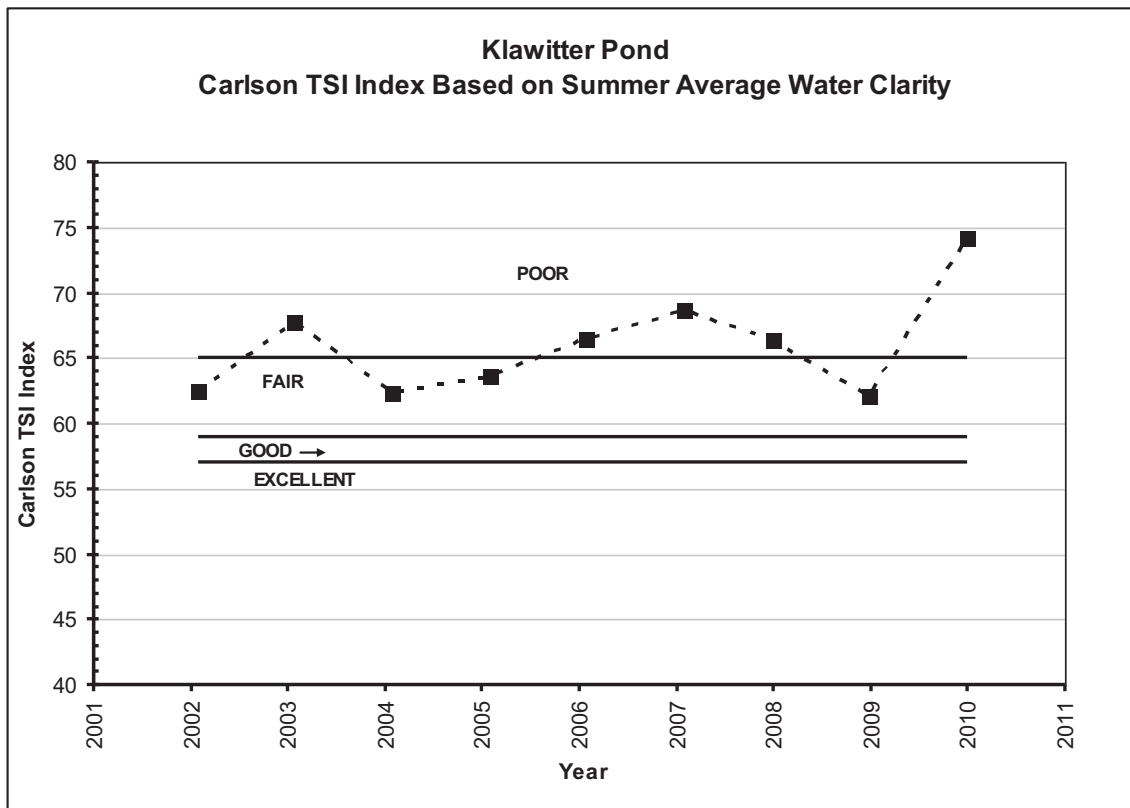
**Klawitter Pond**



**KLAWITTER POND  
SUMMER AVERAGE WATER CLARITY  
Valley Branch Watershed District**

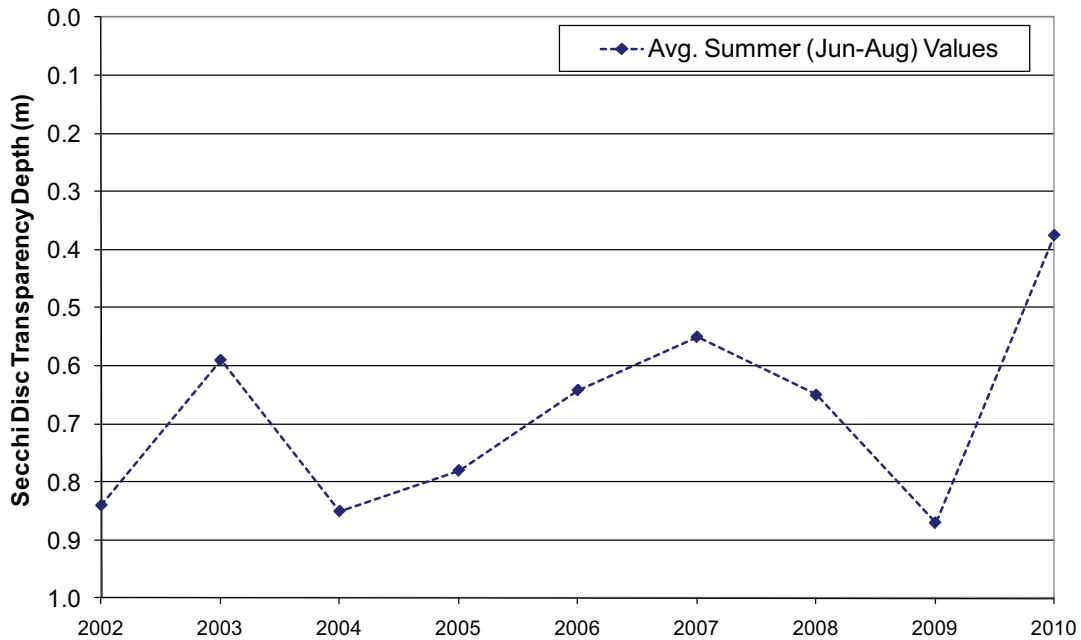


**KLAWITTER POND  
HISTORIC WATER QUALITY DATA  
Valley Branch Watershed District**



**KLAWITTER POND  
HISTORIC WATER QUALITY DATA  
Valley Branch Watershed District**

**Klawitter Pond  
Secchi Disc Transparency Depths**



**Mann-Kendall/Sen's Slope Trend Test  
(Test Period – 2002 to 2010)**

Confidence Level	Test Statistic = -8	
	Test	Significance
99%	-8 < -25	Not Significant
95%	-8 < -20	Not Significant
90%	-8 < -17	Not Significant
80%	-8 < -14	Not Significant
Sen's Slope	-0.037 meters/year	

Notes:

1. Points shown in the graph are the summer average (June-August) Secchi disc transparency depths. Only years with a calculated summer average based on at least 4 measured values are plotted. At least 5 data points were required to complete the trend test.